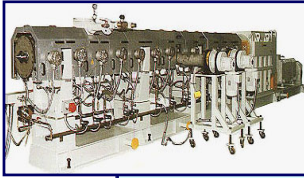


Co-rotating Twin-Screw Extruders



F.lli Maris S.p.A.
C.so Moncenisio 22 - 10090 Rosta (To)
Tel +39 011 9567925-66 Fax +39 011 9567987
www.marsicorp.com / info@mariscorp.com



TM - M SERIES

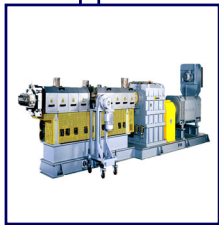
Extruder		30 MW	40 MW	58 MW	70 MW	92 MW	112 MW	133 MW	150 MW	177 MW
Max. screws speed	rpm	600	600	600	600	600	600	500	300	300
Total torque	Nm	220	600	1720	3000	7640	10500	21020	31800	49600
Main motor power	kW	14	38	108	200	480	660	1080	1000	1560
D/d Ratio		1,55								

NOTE:
Some of the models can also be supplied with 1200 rpm



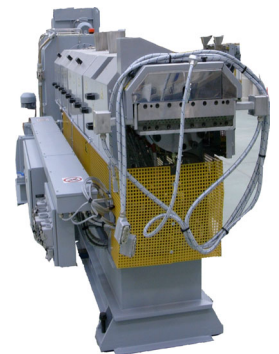
TM - HT SERIES

Extruder		30 HT	40 HT	50 HT	58 HT	70 HT	80 HT	92 HT	112 HT
Max. screws speed	rpm	650	650	650	650	650	650	650	600
Total torque	Nm	330	757	1500	2278	4040	6120	9160	16700
Main motor power	kW	22,5	51,5	102	155	275	417	623	1050
D/d Ratio		1,55							



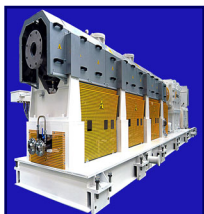
TM - HS SERIES

Extruder		31 HS	41 HS	51 HS	61 HS	72 HS	84 HS	95 HS
Max. screws speed	rpm	1300	1300	1300	1300	1300	1300	1100
Total torque	Nm (*)	420	870	1790	2880	5100	8040	11470
Main motor power	kW (*)	57	132	244	392	692	1094	1320
D/d Ratio		1,65						



TM - VM SERIES

Extruder		32 VM	43 VM	52 VM	61 VM	74 VM	86 VM	97 VM	118 VM
Max. screws speed	rpm	1800	1800	1800	1800	1800	1800	1500	1200
Total torque	Nm	270	620	1160	1860	3300	5200	7400	13000
Main motor power	kW	51	118	218	350	617	810	1157	1650
D/d Ratio		1,78							



(*) A seconda dei paesi d'installazione / (*) Depending on the installation countries

